



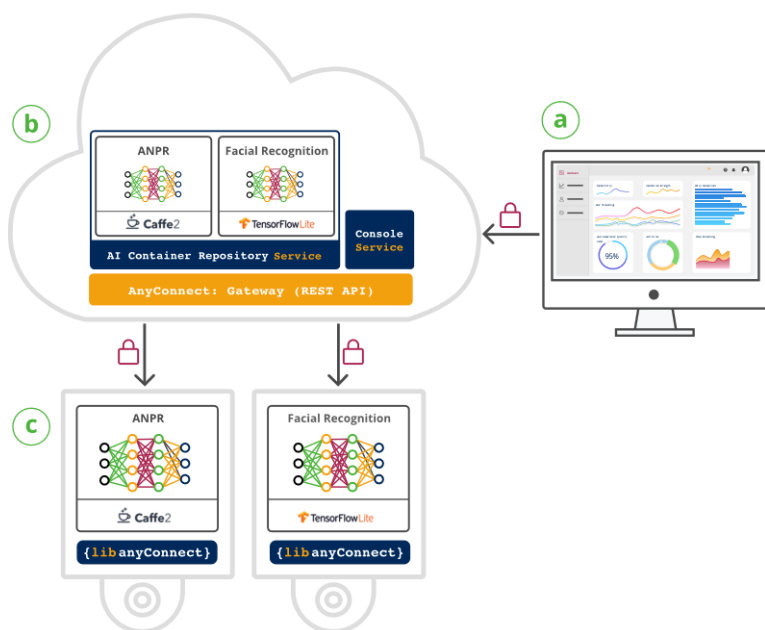
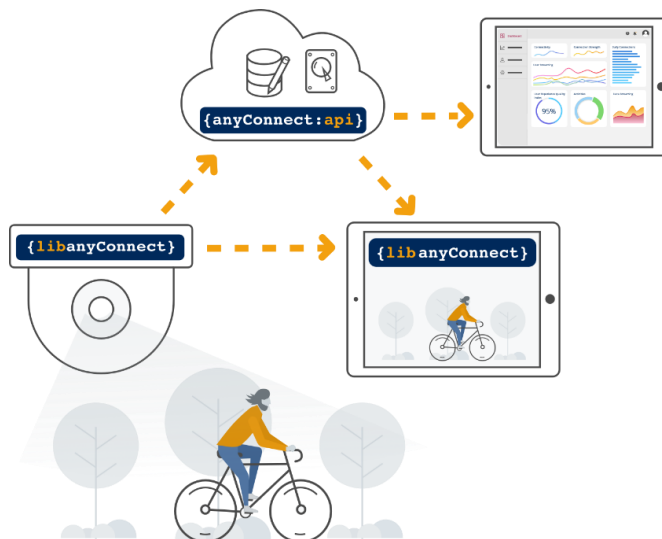
Smarter AI™ Gateway **Multi**

Transform brownfield CCTV & surveillance systems into AI-driven, connected camera networks.

Version 1.4 | May 2020

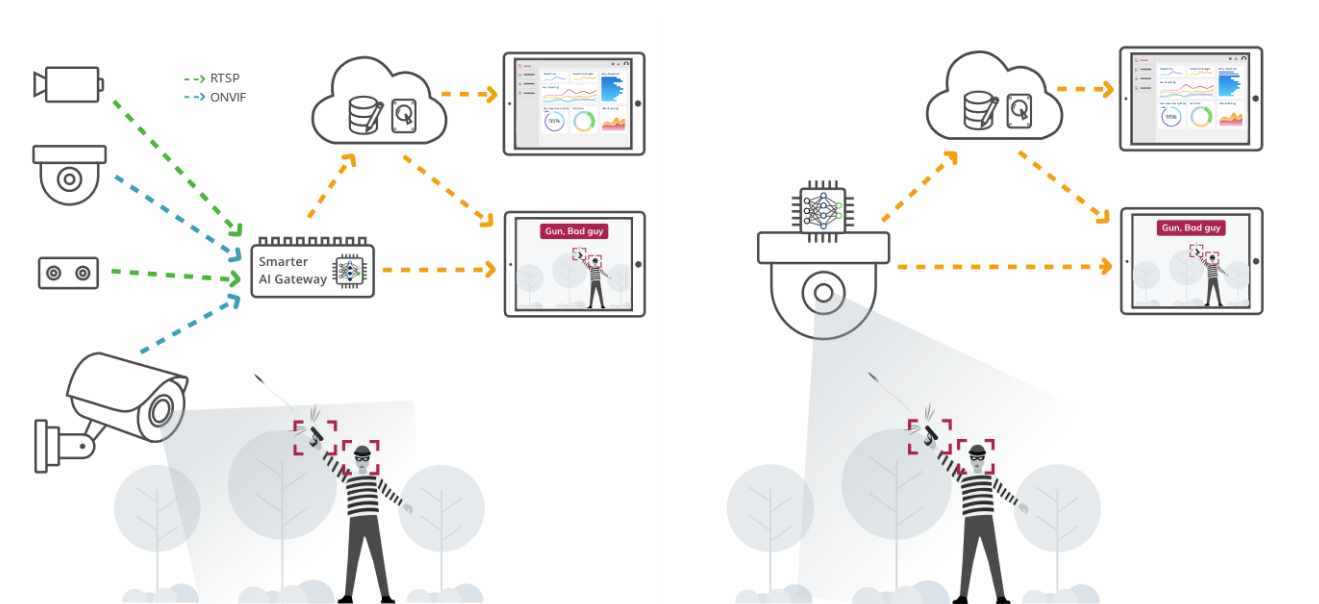
AI is Transforming IP Cameras

AI is transforming IP cameras, using neural networks to classify and identify visual objects. The AnyConnect Smarter Camera™ Platform combines AI with secured connectivity over Wi-Fi, 4G, and 5G networks to enable AI camera networks with DNA - Decisions, Notifications, and Actions.



The Smarter Camera Platform features AI Containers™ for OTA programming of neural network models to support markets and use cases including security, transportation, retail, and more.

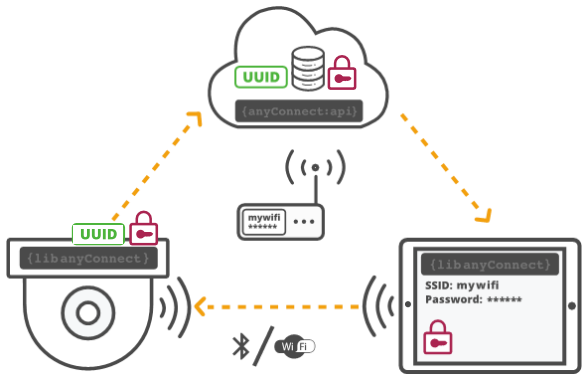
The Smarter Camera Platform supports greenfield, brownfield, and hybrid deployments. A greenfield deployment includes AI cameras where none existed before. A brownfield deployment, in contrast, includes AI gateways to upgrade legacy IP cameras. A hybrid deployment is a combination of greenfield and brownfield.



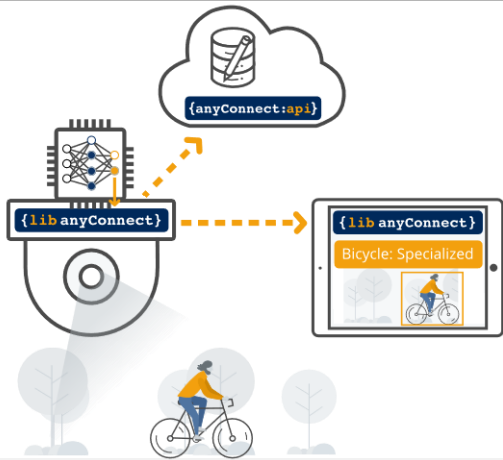
AnyConnect's Smarter AI™ Gateway transforms legacy IP camera deployments into AI-driven, connected camera networks. Smarter AI Gateway smooths transitions from legacy IP cameras to AI camera networks and enables Edge AI when camera form factors are not available or economical. Smarter AI Gateway is fanless, ruggedized, and DIN rail mountable.

Smarter AI™ Gateway Features

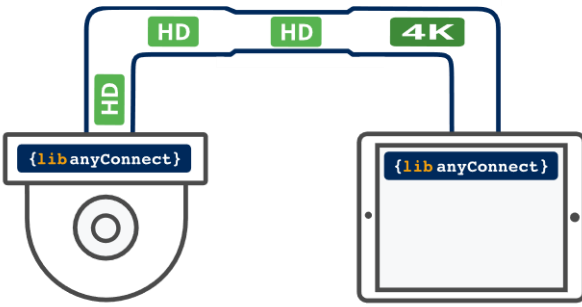
AnyConnect is a software platform for smart cameras such as bodycams, dashcams, and security cameras. Our platform enables deep learning, computer vision, and sensor fusion, in a secure manner over wireless networks. AnyConnect's APIs enable access control, streaming, computer vision, and other smart video features, powered by our patented STUN, TURN, and ICE technologies.



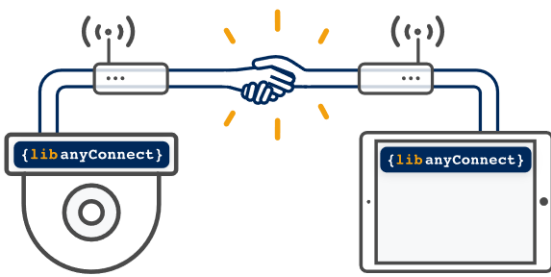
Onboarding – Connect embedded devices to the internet with ease for any interfaces. Create the trust network and register a device to a specific account. Works for mass and zero-touch onboarding as well.



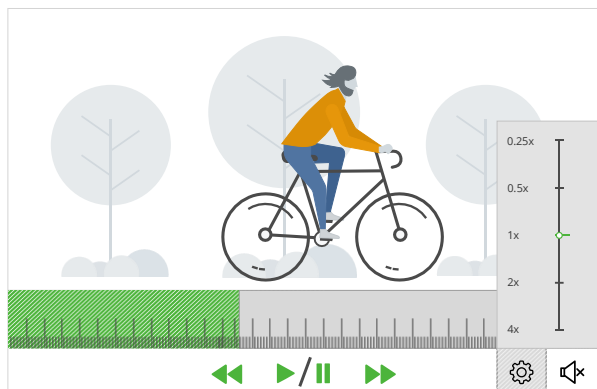
Deploy Edge AI, at scale, seamlessly – Deploy **AI Containers™** securely. Manage & monitor AI models on millions of cameras with multiple types of edge Inference Accelerators



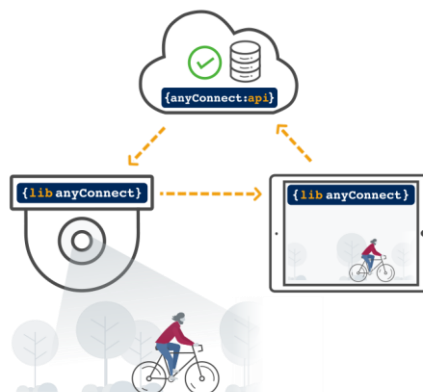
The Best Video over Wi-Fi, LTE & 5G – AnyConnect's adaptive bitrate streaming monitors the network's bandwidth, jitter, packet loss as well as devices CPU capacity to deliver the best possible video quality.



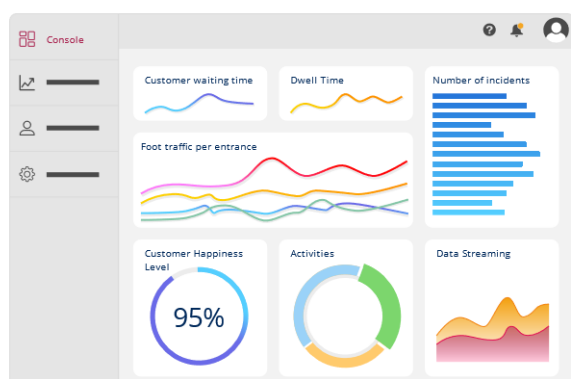
Instant Connections – With patented **STUN TURN ICE** technologies for NAT traversal, AnyConnect connects any camera and mobile device, on any fixed or mobile network, across any NAT or firewall.



Recording & Playback - AnyConnect combines continuous and event recording for video, audio, and data. AnyConnect delivers the best possible video quality, regardless of network interruptions.



Access Control - Grants access to only the right users over public networks (Wi-Fi, LTE, 5G, etc.) with different access levels. AnyConnect Access Control is secure and enables you to be privacy-compliant.



Console - Cloud-based tool for managing your connected camera networks. Console provides a real-time view of KPIs and CDRs, including camera activity, health, and much more.



Over-the-Air (OTA) Programming - Deploy securely, over Wi-Fi, 4G, 5G & Ethernet: device applications, access control rights, configuration, OS & firmware updates, and AI Containers™.

Technical Specifications

Smarter AI™ Gateway		Multi
Video CODEC		h.264, h.265, VP9
IP Cameras per AI Gateway		Up to 14 @ 1080p30 (2 at 2160p60)
AI Accelerator		Nvidia Jetson Xavier NX
Supported IP Cameras		RTSP & ONVIF Profile S. See 3 rd party camera support document.
Supported AI Models		AnyConnect AI Store
Cellular	Options	Default – No Cellular Interface
		4G – 4G/LTE Modem with Worldwide support
		5G – 5G with LTE Modem, Sub 6Ghz, Worldwide support
	SIM Card	2 Micro SIM slots for cellular network redundancy
	GNSS	Available with 4G and 5G options
Wi-Fi		N/A
Bluetooth		N/A
Power Inputs	PoE	Nominal: 802.3.bt Type 3 (60 W)
		Minimum: 802.3.at Type 2 (30 W), with no extensions such as SSD, USB, etc.
	DC	9 to 52 VDC, 60W (power supply not included)
	USB Power Delivery	Power Delivery 3.0 @ 60W on the USB Type-C Port
	Redundancy	Redundant power supported (PoE & DC)
Static Discharge Protection	Physical Contact	8 KV
	Via Air	15 KV
USB Interfaces		2 x USB 2.0
		USB 3.1 Gen 2, Type C

Ethernet	2 x 1000BASE-T (1 port with PoE)
Link Aggregation	IEEE 802.3ad Dynamic link aggregation (802.3ad, LACP)
Display Interface	1 x DisplayPort 1.4
Memory Card	Yes, micro SDXC UHS-I
Storage (optional)	NVME SSD (PCIe 3.0 4x)
Mount	DIN-Rail IEC/EN 60715 (35 x 7.5) 19" rack mount through 3 rd party adapter
Temperature Rating	-20°C to +70°C (-4°F to +158°F)
Standards	CE, FCC Class A

Mechanical Specifications

FRONT VIEW



BACK VIEW



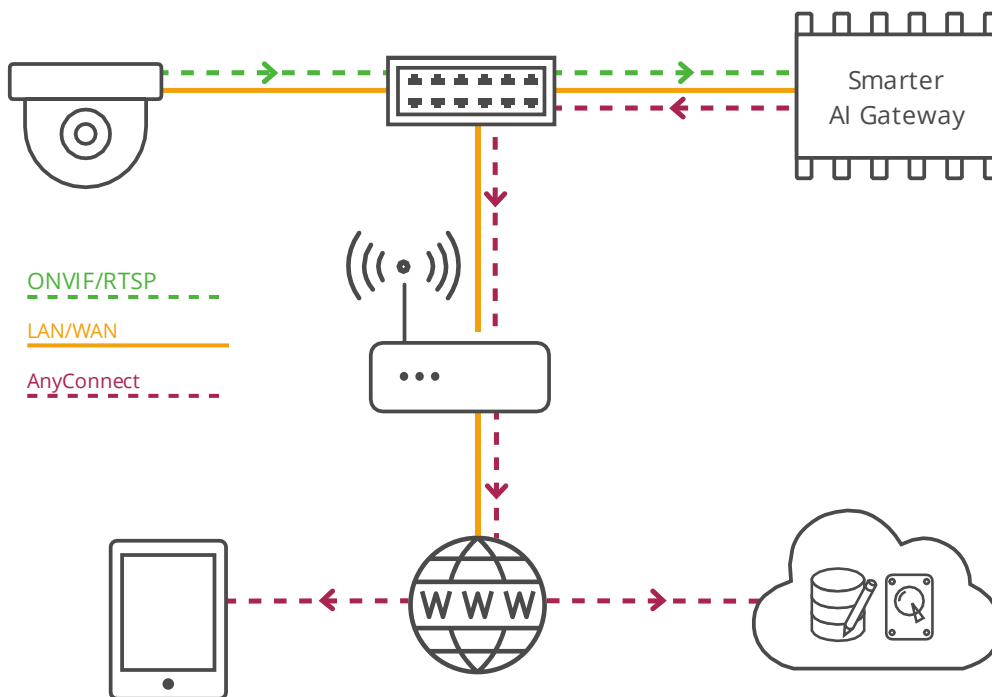
Ordering Information

Product Description	SKU
Smarter AI Gateway Multi	AC-AIGW-MULTI
4G/LTE kit for Smarter AI Gateway	AC-AIGW-LTE-KIT
5G kit for Smarter AI Gateway	AC-AIGW-5G-KIT
Smarter AI Gateway Multi – 4TB SSD	AC-SSD-4T
Event Recording (30 days retention)	
Multi Subscription HD/4K – Monthly	AC-AIGW-MULTI-EVNT-4K-MNTH
Multi Subscription HD/4K – Annual	AC-AIGW-MULTI-EVNT-4K-1YR
Multi Subscription HD/4K – 3 Years	AC-AIGW-MULTI-EVNT-4K-3YRS
Continuous Recording (30 days retention)	
Multi Subscription HD/4K – Monthly	AC-AIGW-MULTI-CONT-4K-MNTH
Multi Subscription HD/4K – Annual	AC-AIGW-MULTI-CONT-4K-1YR
Multi Subscription HD/4K – 3 Years	AC-AIGW-MULTI-CONT-4K-3YRS

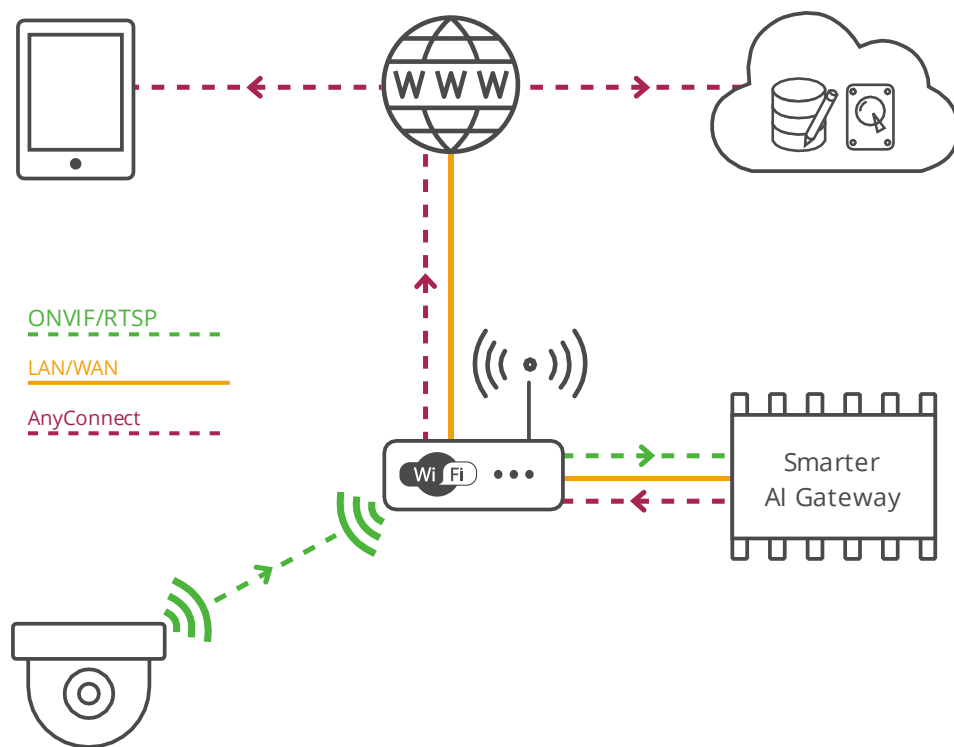
Deployment Options

Smarter AI Gateway Multi supports legacy IP cameras through wired and wireless network interfaces. Typical deployment options include:

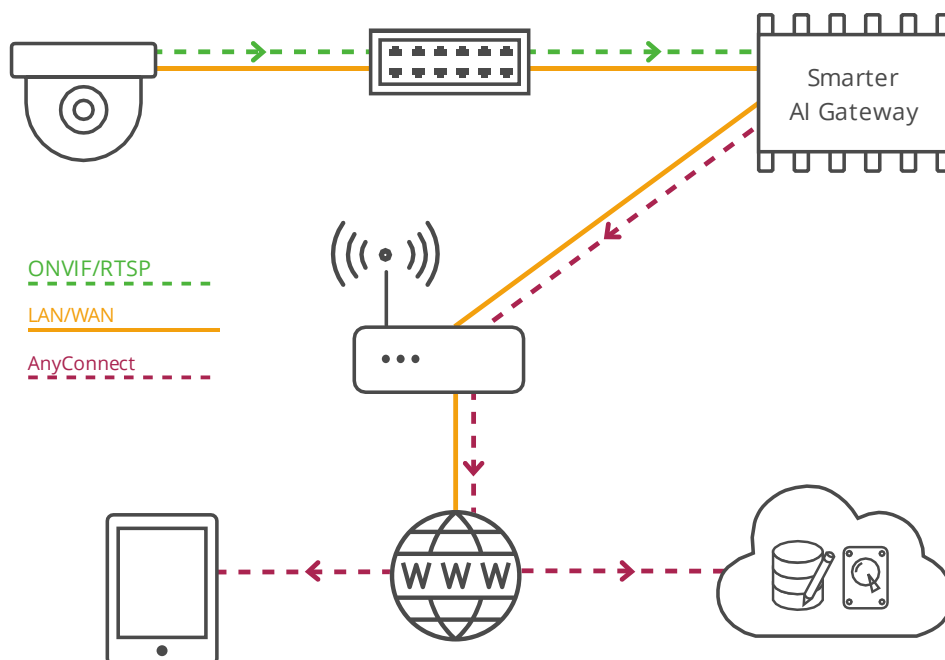
ETHERNET



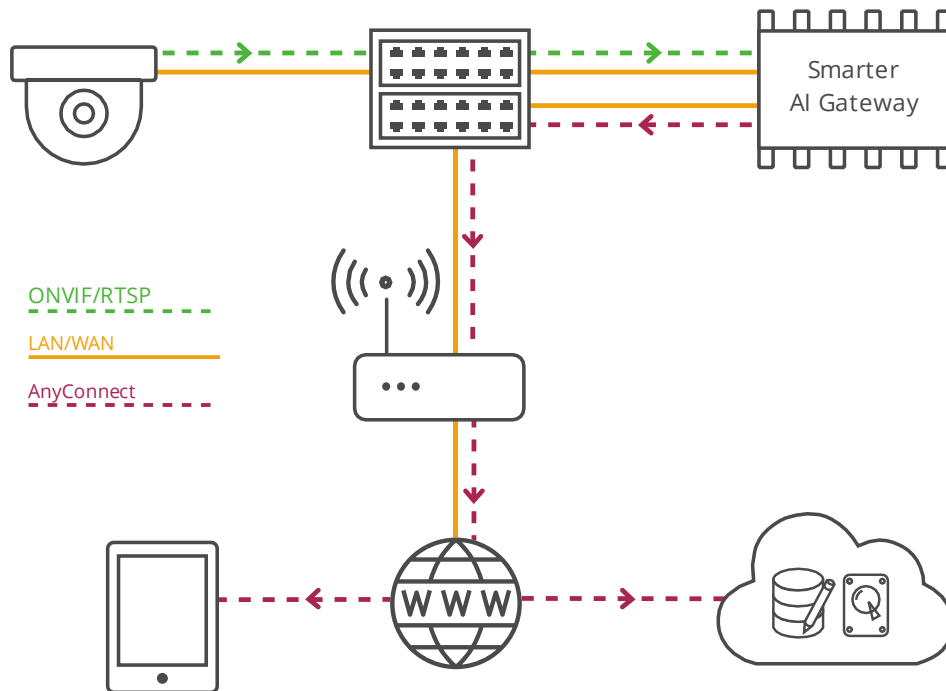
IP Camera connected to Smarter AI Gateway by Ethernet;
Smarter AI Gateway connected to the Internet by Ethernet.



IP Camera connected to Smarter AI Gateway by Wi-Fi through an Access Point;
Smarter AI Gateway connected to the Internet by Ethernet.

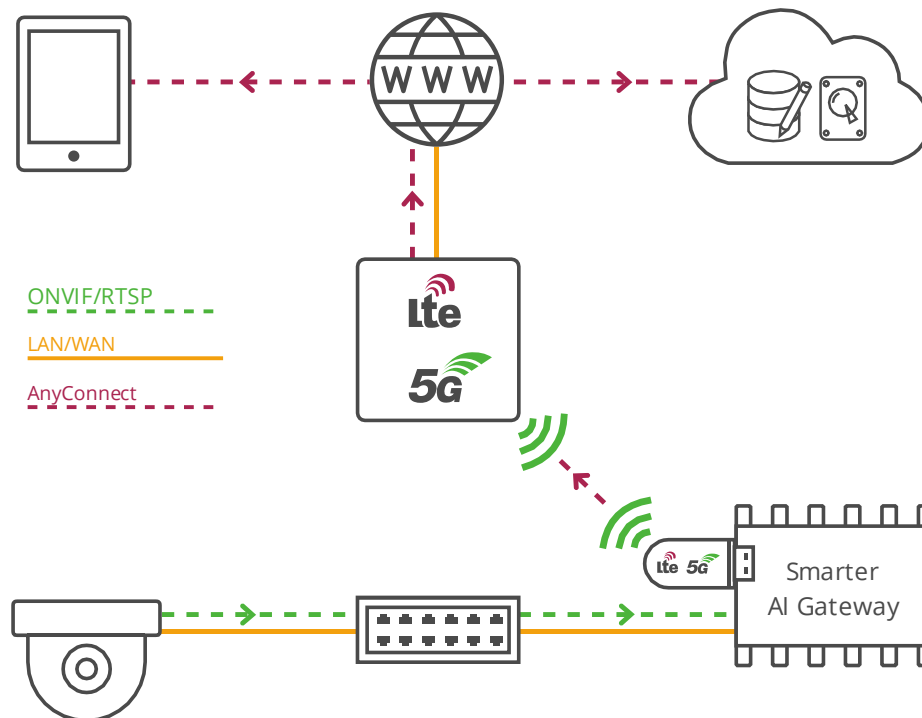


IP Camera connected to Smarter AI Gateway by Ethernet on one network;
Smarter AI Gateway connected to the Internet by Ethernet through another network.



IP Camera connected to Smarter AI Gateway by Ethernet;
Smarter AI Gateway connected to the Internet by redundant Ethernet links (LACP).

LTE/5G (LTE/5G USB modem not included)



IP Camera connected to Smarter AI Gateway by Ethernet;
Smarter AI Gateway connected to the Internet by LTE/5G.

About AnyConnect

AI is transforming IP cameras, using neural networks to classify and identify visual objects. The AnyConnect Smarter Camera™ Platform combines AI with secured connectivity over Wi-Fi, 4G/LTE, and 5G networks to enable AI cameras, gateways, and networks with DNA - Decisions, Notifications, and Actions.

Contact Us:

partner@anyconnect.com

sales@anyconnect.com

support@anyconnect.com

Offices:

AnyConnect USA

4040 Civic Center Drive
San Rafael, CA, USA

AnyConnect Southeast Asia

250 North Bridge Road,
Singapore

AnyConnect Japan

7-7-7 Roppongi
Tokyo, Japan

AnyConnect Europe

Skopje, Nikola Vapcarov 7,
Macedonia

The Fine Print

© 2020, AnyConnect. All rights reserved. Smarter Camera™, Smarter AI™, and AI Container™ are trademarks of AnyConnect. Specifications can change without notice.